

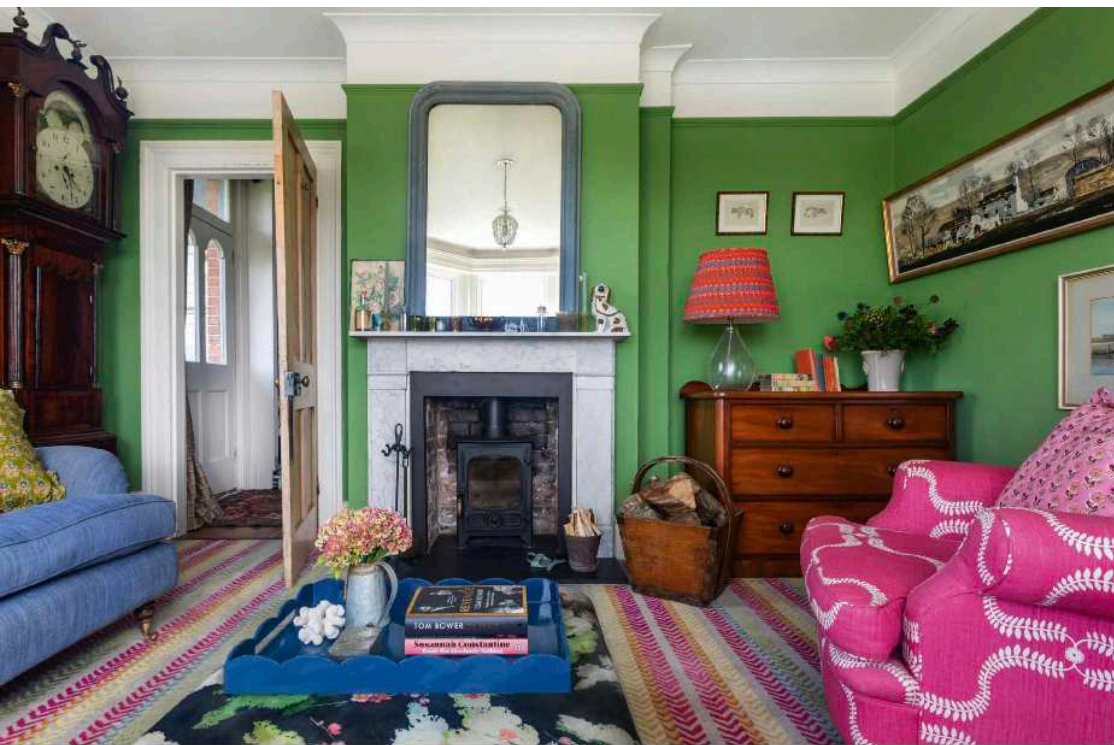


Sarah with one of her dogs, Timber. **FACING PAGE** Sarah has filled every corner of the sitting room with collectables. The walls are painted in Invisible Green by Edward Bulmer Natural Paint. The cushions and lampshades are from Huddle Collection. The corner shelves and little cupboard were inherited from Sarah's side of the family. The glassware was collected by Sarah's grandmother when she lived in Sudan.

Shades of COLOUR

Sarah Hazebrock has overhauled her Victorian home, turning it into a fun and colourful backdrop for treasured antiques, and her own collection of lampshades and homeware

FEATURE AMY MAYNARD PHOTOGRAPHS RICHARD GADSBY



Back in 2011, Sarah and Myles Hazebroek were living in a townhouse in Tunbridge Wells when they decided they needed more outdoor space for their children, Ted and Polly, to roam. Sarah, who runs homeware brand Huddle Collection, and Myles, who runs a PR agency, narrowed their search down to the pretty Kent village of Goudhurst. The couple's budget meant that they were on the hunt for a doer-upper. 'We wanted a period house with views and also with potential, as we didn't have the money to buy the perfect house. Plus, we wanted to put our stamp on it,' says Sarah.

Sarah had links with estate agents, having previously worked in the industry, and so was one of the first to hear about a detached Victorian on the outskirts of the village that ticked all their boxes. 'The house was perfect,' says Sarah. 'It was situated in an acre of garden with wonderful views over the surrounding countryside. It needed a total overhaul – rewiring, reroofing and totally redecorating.'

They decided to live with the property as it was for three years in order to save up for the renovation. As well as completely redoing the interiors, the couple added an extension with further bedrooms and a large kitchen-diner.

It was in 2021, after struggling to find affordable block-printed lampshades, that Sarah decided to set up her own homewares business, Huddle Collection. Before long, her stock was overtaking the house and so Myles came to the rescue, converting the outbuilding into her office and store room. 'The existing building was there but it was in disrepair, so Myles rebuilt it himself,' says Sarah. Her stock, of course, does still creep over into the house, and the property is a wonderfully eclectic, ever-evolving canvas for her lampshades and soft furnishings in all the colours of the rainbow.

She describes her style as 'colourful and cosy', and, as well as her bright homewares peppering each space, walls, fixtures and fittings are painted in bold hues. Meanwhile, in every corner there are little collections. 'A lot of our antiques are inherited,' says Sarah. 'The Georgian corner shelving unit in the sitting room belonged to my grandmother and is filled with the glassware she bought when she lived in Sudan.'

There is also some Dutch influence throughout the home, on account of Myles's family heritage. A row of charming ceramic Dutch Delft houses lines the sideboard in the snug, while several



paintings from Amsterdam can be found hanging on the walls.

Sarah loves to source her own pieces – her most treasured collection is the striped Cornishware on the kitchen shelves. 'I started collecting when I got my first flat in Putney and bought a piece a month from the age of 21,' she says.

Sarah can often be found doing the rounds at Ardingly International Antiques & Collectors Fair – which is where she found some of her larger pieces of furniture. She is particularly thrilled with the pine Edwardian larder cupboard in her kitchen that she painted in Arsenic by Farrow & Ball, and the sideboard in the snug that she painted in Scandinavian Pink Chalk Paint by Annie Sloan.

The family loves living with colour. 'The kitchen is my favourite place to be. It's such a party room with the terrace in summer and fire in winter,' says Sarah. 'I love the colour; people say it's the most relaxing space.'

Sarah is delighted with the end result, and the family couldn't be happier with the location – especially when it comes to picking up new collectables. 'We are lucky to live near Rye and Hastings, because both towns are treasure troves for antique and vintage pieces,' says Sarah. ■ huddlecollection.com

ABOVE The pink chair was found at Ardingly International Antiques and Collectors Fair and has been reupholstered in a Vanessa Arbutnot fabric. The sofas are from Sofas & Stuff, and the carpet is by Kit Kemp. **LEFT** The lampshade in the hallway is from Sarah's own homeware range, Huddle Collection. Sarah found the rug in Bodrum, Turkey, where she first met Myles while on holiday. The walls are painted in Selvedge by Farrow & Ball. **BELOW** The little antique bureau and chair belonged to Myles's family. **FACING PAGE** The ceramic animals on the mantelpiece were bought locally, from SJL Featherstone in Goudhurst.



Sarah embraces colour at every opportunity. The kitchen cabinets are painted in Invisible Green by Edward Bulmer Natural Paint, and the woodwork and shelves in Dix Blue by Farrow & Ball. The rug was commissioned by Sarah from one of her suppliers in India, and is available from Huddle Collection. The pendant lights and larder cupboard were found at Ardingly International Antiques & Collectors Fair, and the table and chairs are from Alexander Paul Antiques in Devon. Sarah has collected striped Cornishware, seen on the shelves, since she was 21.



A gallery wall in the dining area adds character and creates a relaxed feel. The framed tapestry is from Loom Designs and the fish picture is actually a Samsung TV! The ice cream van picture is by the Hastings artist, Claire Fletcher.



The snug features pale-pink walls lined with artwork collected over the years. The rug, lamps, shades, bobbin mirror and cushions are all from Huddle Collection. The sofa is from Sofas & Stuff. Sarah and Myles have collected the Delft miniature houses over the years, in recognition of Myles's Dutch heritage.



ABOVE Sarah found the sideboard at Ardingly International Antiques & Collectors Fair and painted it in Scandinavian Pink Chalk Paint by Annie Sloan. **RIGHT** The blue chest of drawers in the snug was a Facebook Marketplace find. Myles's parents brought back the model boat from their travels to Malaysia in the 1970s, and the painting behind the boat is from Amsterdam. **BELOW** Sarah and Myles have added an extension to their Victorian home, creating two extra bedrooms and a large kitchen/dining room that opens up onto the terrace. Helping to link the old and new buildings, the window frames are painted in De Nimes by Farrow & Ball.





LEFT Polly's bedroom is a colourful haven. The throw, hot water bottle and lampshades are all from Huddle Collection, and the wallpaper was found at Wallpaper Direct. **ABOVE LEFT** Sarah has opted for a vintage cottage feel in the bathroom, with floral wallpaper from Cath Kidston. **ABOVE RIGHT** The house has glorious views of the surrounding countryside. **BELOW** The extension houses the master bedroom on the first floor. Walls are painted in Light Blue by Farrow & Ball, with panelling from The English Panelling Company. The bedside tables were found at Ardingly International Antiques & Collectors Fair and painted in Primer Red by Annie Sloan. The bed is from Sofas & Stuff.



GET THE LOOK

ODE TO JOY

Embrace heritage hues and bold patterns for a look that feels playful yet polished.

COMPILED BY KIRSTY LYONS

1 Bespoke framed multicolour Otomi, £1,150, Loom Designs **2** Set of 8 French ladderback dining chairs (one shown), £950, Sussex Antiques and Interiors **3** Victorian Staffordshire pottery copper lustreware flatback King Charles Spaniel, £115, Rita's Bazaar **4** Cornish 6oz mugs, available in six colourways, £15 each, Cornishware **5** Fine Decor Athina wallpaper in Green and Yellow, £9.99 per roll, B&Q **6** Invisible Green, £66 for 2.5L matt emulsion, Edward Bulmer Natural Paint **7** Royal Delft handpainted Dutch plate, 1979, £79.13, Léon Paul Antiques **8** Chalet cuckoo clock with bell tower, £1,795, cuckooaclocks.co.uk **9** Bobbin 3-drawer chest in Blue, £499, John Lewis **10** Brunel 3-seater sofa in house clever velvet, Fern, £4,170, Sofas & Stuff **11** Tess hand block filled cotton cushion, £45, Huddle Collection **12** Själsligt decoration, set of 3, Green, £17, Ikea **13** Chloe large hand block filled cotton cushion, £60, Huddle Collection **14** Elsie rug, 120x180cm in Blue, £135, Angela Reed